



STAFF

Pam Molitoris
Executive Director
pmolitoris@centralilfoodbank.org

Tom Killam
Assistant Director
tkillam@centralilfoodbank.org

Kristy Gilmore
Manager of Food & Agency Resources
kgilmore@centralilfoodbank.org

Kaleigh Friend
Public Relations Manager
kfriend@centralilfoodbank.org

Shawna Cain
Agency Relations & Program Assistant
scain@centralilfoodbank.org

Laura Boyd
Operations Assistant
foodlist@centralilfoodbank.org

Melanie Compton
SNAP Outreach Coordinator
mcompton@centralilfoodbank.org

Gloria Shanahan
Public Outreach Coordinator
gshanahan@centralilfoodbank.org

Anna McMakin
Executive Assistant
amcmakin@centralilfoodbank.org

Bill Nickell
Warehouse Manager
bnickell@centralilfoodbank.org

Warehouse Staff
Phil Adams
Darren Farley
C.J. Farrand
Mark Myers
Phillip Walker

DIRECTOR'S DISH

by Pam Molitoris

At the close of the holiday season, I take a moment to reflect on the past year and think about how the Foodbank has changed and grown. With 2012 marking the Foodbank's 30th anniversary, I can't help but be proud of how far we've come since our inception in 1982. This year, as many others in the past, has had some challenges, but also some outstanding successes.

One of those many successes was the news that Central Illinois Foodbank had again been awarded a 4 star rating through Charity Navigator, which is the highest rating a non-profit can attain. In case you're unfamiliar with the organization, they are a non-profit that evaluates other organizations' financial reporting and program efficiency. This highly coveted rating is a testament to the continued efforts of everyone at the Foodbank to make our organization run as efficiently and responsibly as possible.

During the summer months, although we experienced a decrease in USDA commodities, which include staple products such as whole chicken, canned vegetables and fruit, and other nutritious food items, we worked hard to make the best selection possible available to our partner agencies. Through the efforts of our food sourcing staff and the generosity of our many food

donors, we were able to pull through and withstand the strain this put on our other resources.

Our ability to succeed in this uncertain economic climate is in large part due to the unrelenting support of our partners, volunteers, advocates, and donors. I've tried to imagine what our community would be like without this support - the children who would go to bed hungry, the families struggling between choosing which bills to pay - it's a picture that sometimes keeps me awake at night. Our supporters give whatever they can to make sure this isn't a concern, and without that, we would live in a very different world.

This year, I'd like to simply say, "Thank you" for all that you do. Your efforts make a lasting impact, and together, we're feeding hope and fighting hunger 365 days a year.

Thank you,

Pam Molitoris



THE 2012 FEINSTEIN CHALLENGE

Maximize your donation!

During March and April every year, the Feinstein Foundation donates one million dollars to domestic hunger-relief organizations across the nation. Central Illinois Foodbank regularly reports our fundraising during these months and we receive a percentage of the \$1 million in proportion to the fundraising nation-wide. You can make your gift go even further when you give during March and April!



The 13th Annual Harvest Ball raised an impressive \$85,000 for Central Illinois Foodbank. The evening featured live entertainment from the Jane Hartman Trio and the Springfield Ballet Company, a display representing the 1 in 4 children food insecurity information, and a slideshow of photos from throughout the past year at the Foodbank. Ed Curtis was awarded the Good Samaritan Award for his continued dedication to fighting hunger in Central Illinois. We greatly appreciate the sponsorships for this year's event, both old and new.

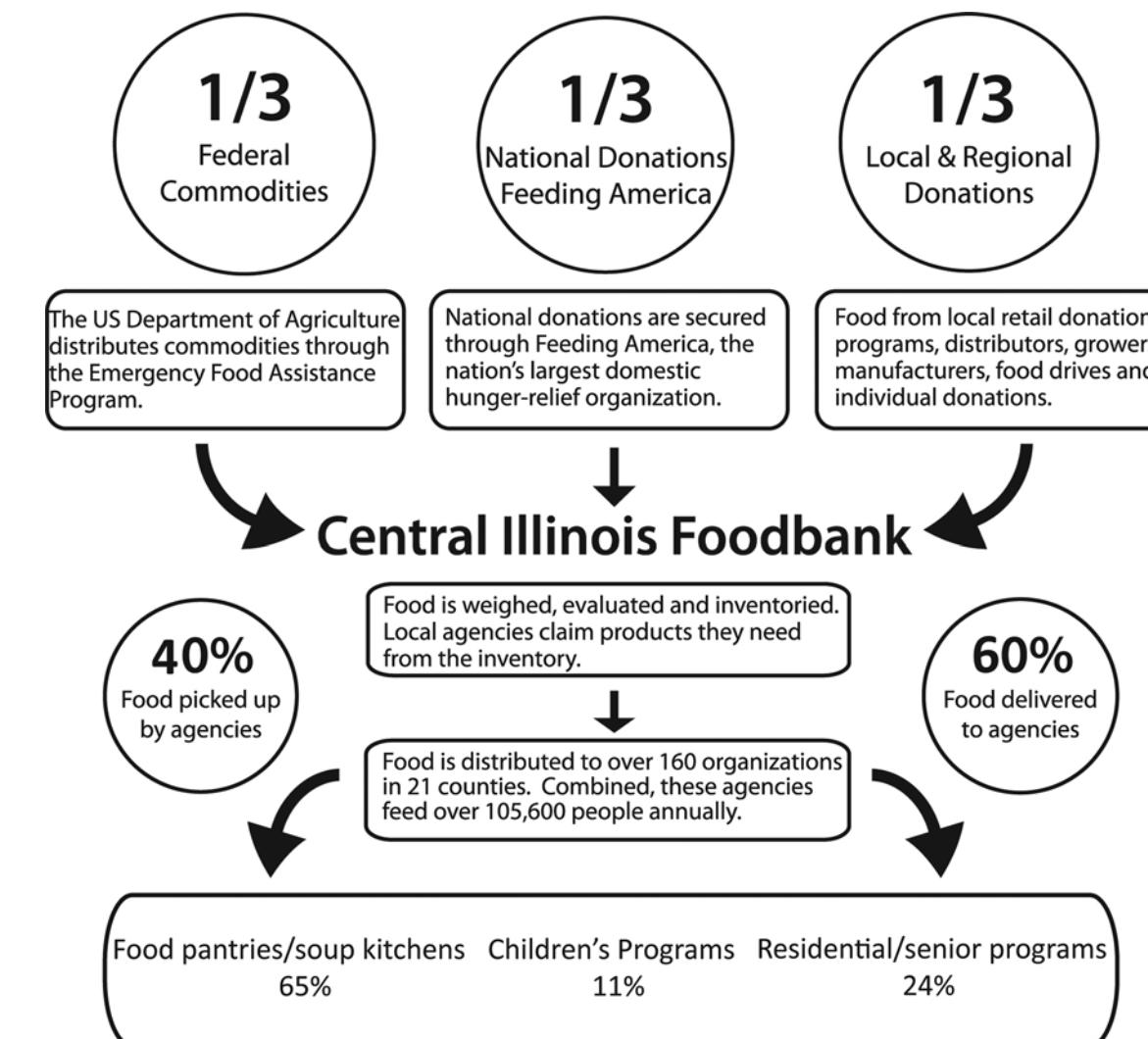
Caught in the Act of Excellence- 4th Quarter

Agencies going above and beyond to better serve their communities

- Asbury Children's Supper Hour
- Panhandle Food Pantry
- Kumler Outreach Ministries
- Oconee Food Pantry
- Homework Hangout
- Maroa Food Pantry
- Midland Area Food Pantry

Thank you for doing your best to enrich the lives of hungry families in Central Illinois!

HOW DOES CENTRAL ILLINOIS ACQUIRE AND DISTRIBUTE FOOD?



GET INVOLVED

Looking for more ways to help Central Illinois Foodbank? Beyond donating money, there are many ways that individuals and groups can help in the fight against hunger. Volunteering and Food Drives are two great ways to get involved with the Foodbank, and learn a little more about daily operations and about local hunger issues.

VOLUNTEER

Throughout the year, the Foodbank has special opportunities that arise for volunteers. They include product labeling, mobile food pantries, and food sorting. Often these needs arise with short notice. To get on our volunteer email list, please email Shawna Cain at: scain@centralilfoodbank.org.

FOOD DRIVES

Food drives are a great way to involve groups in local hunger relief efforts. Those looking for a twist on the traditional food drive can hold a personal care items drive and collect soap, shampoo, and other hygiene items that cannot be purchased with LINK cards. Register the drive with Kristy Gilmore at: kgilmore@centralilfoodbank.org.



2011 ANNUAL REPORT

BOARD OF DIRECTORS

Amy Hagen, *President*
 CJ Saladino, *Treasurer/Vice Pres.*
 Erica Riplinger, *Secretary*

Carol Dove
 Dr. Gary Dunnington
 Don Hickman
 Kathi Karr
 Marsha Prater
 Sara Ratcliffe
 Robbie Robert
 Penny Roth

STATEMENT OF ACTIVITIES

Year Ended May 31st, 2011

Revenues and other support

Program Service Fees	\$	759,802
Grants & Contracts		422,565
Contributions		714,840
Contributed Food Received		12,009,219
Interest		10,037
Other		4,957
Total Revenues and other support	\$	13,921,420

Expenses

Foodbank Operations	\$	1,197,423
Contributed Food Distributed		11,866,894
Administrative & Fundraising		387,477
Depreciation		88,250
Total Expenses	\$	13,540,044

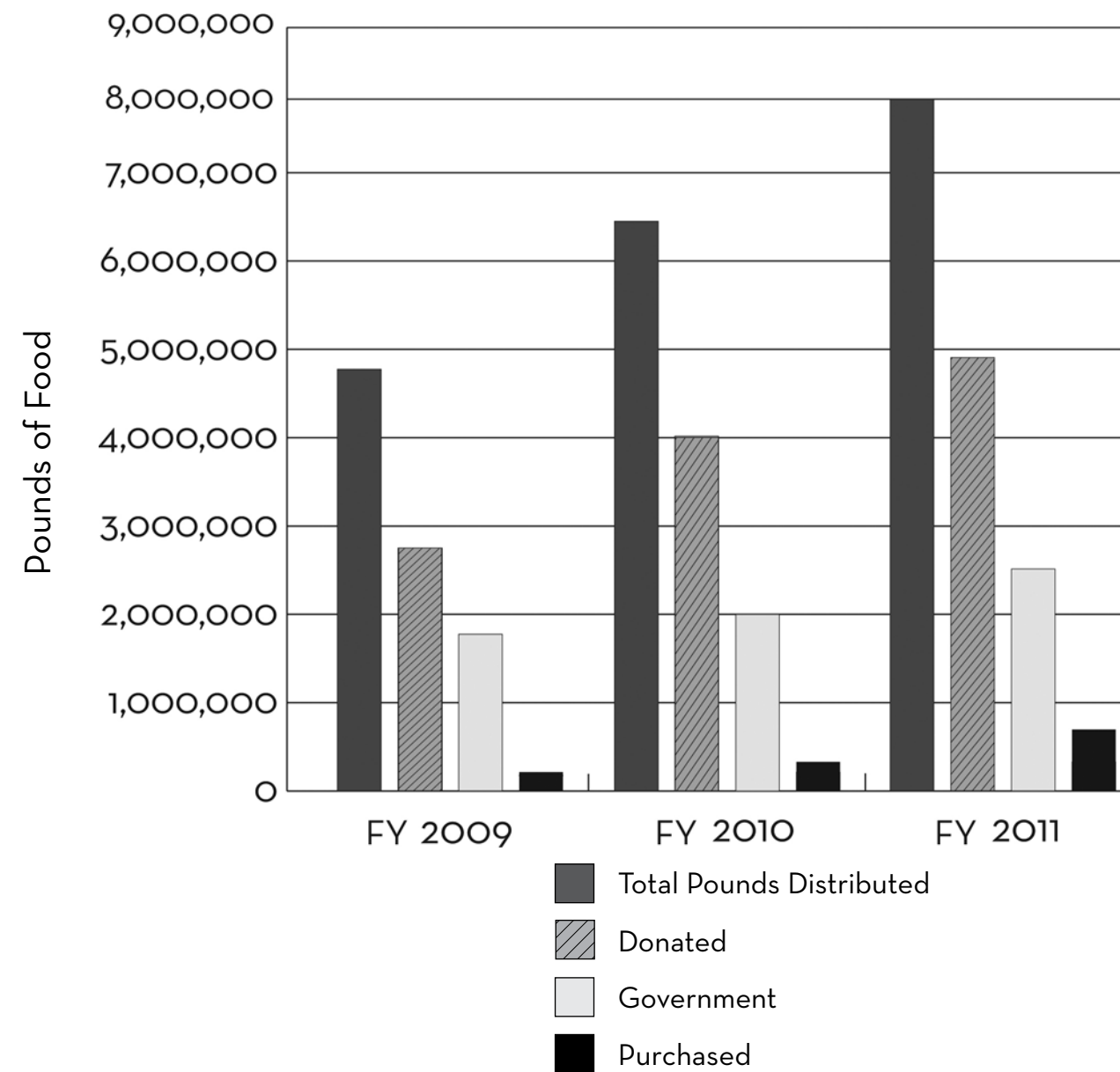
Change in Unrestricted Net Assets	\$	381,376
Change in Temporarily Restricted Net Assets		157,990
Change in Net Assets		539,366
Net Assets at Beginning of Year		2,066,769
Net Assets at End of Year		2,606,135



97% of every dollar goes directly to feed the hungry.

3% goes to administrative and fundraising costs.

FOOD DISTRIBUTION MIX IN POUNDS



Charity Navigator recently awarded Central Illinois Foodbank a 4 star rating, the highest rating they bestow on the charities they monitor. Charity Navigator is America's premier independent charity evaluator. Charity Navigator uses an unbiased, objective, numbers-based rating system to assess the financial health of America's best known and largest charities.

OUR MISSION

To collect donated food and grocery items from growers, manufacturers, processors, wholesalers and retailers for distribution to charitable agencies serving people in need.



OFF THE SHELF

WINTER 2012 NEWSLETTER & ANNUAL REPORT

30th Anniversary Foodbank celebrates 30 years of fighting hunger

What began in 1982 as an empty warehouse at Brother James Monastery, 2000 pounds of apple cobbler mix and a few staff members, has transformed into a long standing non-profit which now partners with 150 agencies in twenty-one counties.

The founding mission still remains true: "We just wanted to feed people who were hungry," founding Board member Judy Morrow said. Thirty years later, Central Illinois Foodbank stands stronger than ever and is still dedicated to its original mission.

"We feed the hungry," current executive director Pam Molitoris says, echoing Morrow. "That's our mission; working as efficiently as we can to provide food to those in need."

Now located in a 22,000 square foot warehouse in central Springfield, the Foodbank has become more efficient than ever. Occupying a warehouse that holds up to 700,000 pounds of food-that's 25-30 semi truck loads- the

Foodbank turns over its inventory in three to four weeks on average. Industrial shelves tower with pallets of juices, cereal, canned vegetables, and hygiene products. Each day, eight to nine agencies visit the Foodbank to load up trucks. The Foodbank also delivers to areas too far away for regular appointments to come to Springfield.

By increasing efficiency and through the continued support of the community, more food is being distributed than ever before. In fiscal year 2011, the Foodbank distributed 8.1 million pounds of food, an increase of

nearly two million pounds from the previous year. The Foodbank has also adopted new methods of distribution to better serve the communities within its service area. Just five years ago, Kristy Gilmore, Manager of Food and Agency Resources, was wishing for one of these new methods - a mobile food pantry. Today, mobile pantries take place in five counties demonstrating the highest need.

Gilmore says, "Mobile pantries are essential to getting nutritious products where they need to be. We're very fortunate to be able to do these, but since our grant that funded them last year has been expended as budgeted, we'll need community support to help keep them going."

Over the past 30 years, much has changed at the Foodbank. Built three decades ago on a few thousand dollars and some boxes of apple cobbler, we now distribute over eight million pounds of food annually to 150 agencies in Central Illinois. We look forward to growing and adapting for whatever the future may bring.

SAVE THE DATE

30th Anniversary
 Celebration
 Thursday, June 21, 2012
 4:00-7:00 P.M.
 Location TBA

Please join us for a
 celebration of 30 years
 fighting hunger in Central
 Illinois!

